

# An Atlanta Icon: Reborn.



1460 WEST PEACHTREE STREET NW, ATLANTA, GA, 30309

A truly once in a generation opportunity to acquire a historic masterpiece.





## OPPORTUNITY

City Realty Advisors, LLC is pleased to present **1460 West Peachtree Street NW**, a truly once in a generation opportunity to purchase a historic masterpiece. A property owned by its original owner since 1930 when first built, Winnwood Apartments has now been fully renovated down-to-the-studs and brought back to life as a 48-unit boutique apartment building in the heart of Midtown, Atlanta. Located just off the famed Peachtree Street, this historic property offers modern amenities with easy access to all Atlanta has to offer, including the High Museum of Art, Piedmont Park, the Atlanta Botanical Gardens, Savannah College of Art and Design (SCAD), Georgia Tech, and beyond.

# ASSET OVERVIEW

**Parcel Address:** 1460 West Peachtree St NW,  
Atlanta, GA 30309

**Land Size:** 0.7337 +/- Acres  
(31,962 +/- square feet)

**Built:** 1930 (Certified Historic Structure)

**Renovated:** 2023

**Apartment Unit Count:** 48

**Current Zoning:** SPI-16 SA1

(Note: Property cannot be redeveloped,  
facade easement in place)

**Parking:** Off Street (Limited to 14 covered  
and additional surface spaces)

**County:** Fulton County

**Submarket:** Midtown

**Walk Score:** 75 (Very Walkable)

**Bike Score:** 78 (Very Bikeable)

**Income:** Upon Request







## UNBEATABLE LOCATION

Perfect central location minutes from Piedmont Park, Atlantic Station Atlanta Botanical Gardens, Atlanta Beltline, Georgia Tech, Downtown, and Buckhead. Blocks from SCAD, MARTA Arts Center Station, The High Museum of Art, and MODA.

## NEWLY RENOVATED APARTMENTS

All new apartment layouts with original hardwood floors that have been brought back to life, together with the amenity of modern kitchens and bathrooms. All kitchens include stainless steel appliances, an electric cooktop, quartz countertops and backsplashes, a microwave and a dishwasher.

## FULLY FURNISHED AND EQUIPPED

Inspired living with every detail considered. Enjoy your fully furnished home including luxury linens, bath towels, coffee maker, flatware, stemware, pots, pans, and dishes.

# HOME FEATURES

48 studio and one-bedroom homes that offer boutique style living unique to the neighborhood.

- Oversized windows
- Modern retro design
- Washer and dryer
- Stainless steel appliances
- Electric cooktop
- Dishwasher
- Quarts countertops
- Tile backslash
- Oven
- Microwave
- Exposed brick
- Skylights
- USB ports
- European soft close cabinets
- Luxurious resort style restrooms
- Restored original hardwood floors
- Smart thermostats
- Keyless entry







Buckhead



Atlanta Peachtree  
Amtrak Station

Loring Heights

SCAD

1460 W Peachtree St NW

SCAD

SCAD

Ansley Park

Atlantic Station

Arts Center  
MARTA Station

Colony Square

Midtown

Georgia Tech

Piedmont Park





Buckhead

Armour  
Yards

Piedmont Atlanta

Atlanta Peachtree  
Amtrak Station

SCAD

SCAD Forty Four

Emmi Midtown Apartments  
by JPX Works

SCAD Forty Five

Buford Spring Connector

Peachtree St NE

Spring Street





Georgia Tech

West Midtown

Atlantic Station

Emmi Midtown Apartments  
by JPX Works

Microsoft

17th Street

SCAD Forty Four

SCAD Forty

Canopy by Hilton

Future SCAD Campus

SCAD Forty Five

Spring Street

19th Street

West Peachtree St NE

Buford Spring Connector





Colony Square

Nomia Apartments  
by Greystar

Midtown

Downtown

Georgia Tech

Midtown Union

Emmi Midtown Apartments  
by JPX Works

HUE Ansley  
Apartments

Canopy by Hilton

Future SCAD Campus

Center For Puppetry Arts

17th Street

SCAD Forty Four

SCAD Forty Five

Pershing  
Park

Peachtree St NE

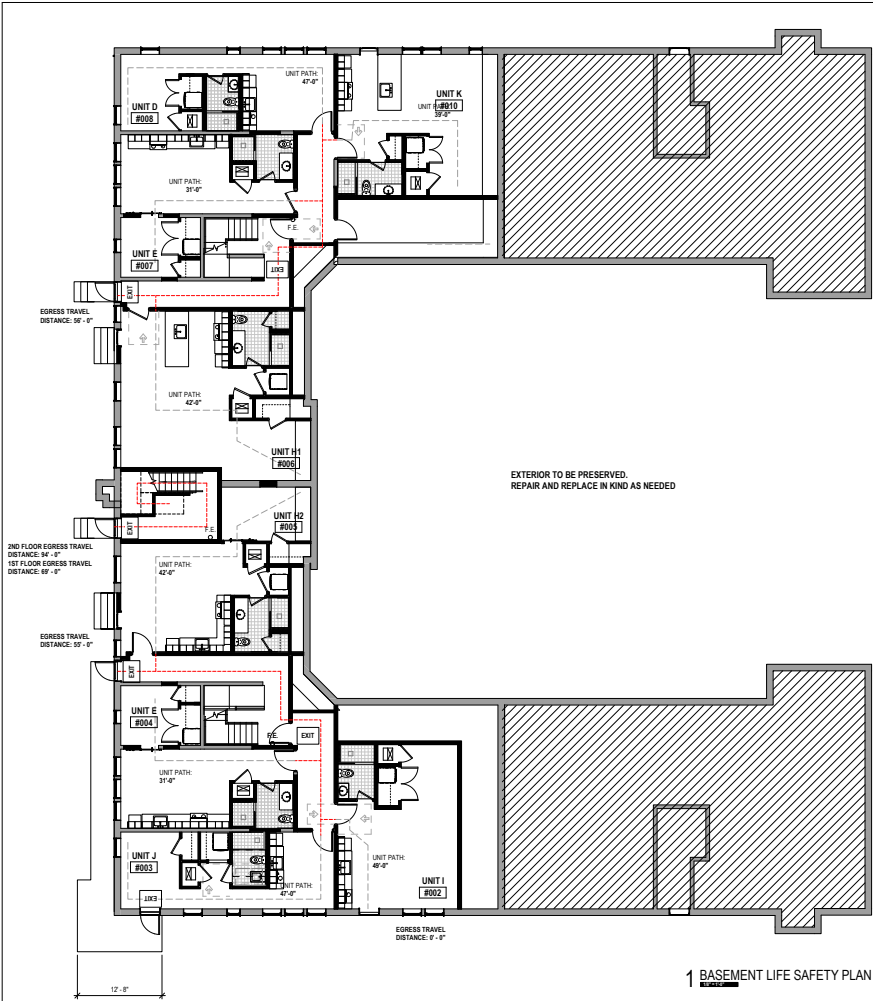
West Peachtree St NE

19th Street

Spring Street



# FLOOR PLANS





[illegible]

619 EAST COLLEGE  
AVENUE, SUITE D1  
DECATUR, GA 30030  
PH: 404 214 5797

W	04 MAR 2004	0000 UTC
---	-------------	----------

PROJECT NUMBER:  
**19-219**

## WINNWOOD APARTMENTS

URBAN LANDINGS  
1460 WEST PEACHTREE NW, ATLANTA, GA 30309

**LIFE SAFETY PLANS**

A005

THIS DRAWING AND THE CAD FILE FROM WHICH IT HAS BEEN CREATED ARE AN INSTRUMENT OF SERVICE FOR THIS PROJECT. THESE DOCUMENTS ARE THE SOLE PROPERTY OF THE ARCHITECT, AND ANY USE OF THESE DOCUMENTS FOR PURPOSES OTHER THAN THOSE ASSOCIATED WITH THIS PROJECT IS STRICTLY PROHIBITED.

RELEASED FOR



4/8/2022 1:17:45 PM



[illegible]





1460 WEST PEACHTREE STREET NW, ATLANTA, GA, 30309

**For additional questions, please contact:**

**Tim Holdroyd**

404-606-0322

[tim@cityrealty.net](mailto:tim@cityrealty.net)

**Nik Hatzis**

404-662-8344

[nik@cityrealty.net](mailto:nik@cityrealty.net)